



Instruction Manual

**SC-1250
Video Scaler**

Table Of Contents

1.0	Introduction	4
2.0 & 3.0	Multi-Language Safety and IPR Information	6
4.0	Specifications	12
5.0	Package Contents	12
6.0	Connecting the Hardware	13
7.0	Operating The Unit	14
8.0	Troubleshooting	20
9.0	Limited Warranty	21
10.0	Regulatory Compliance	21
11.0	Contact Information	22

1.0 INTRODUCTION

Thanks for purchasing this SC-1250 Video Scaler from TV One. The SC-2150 is designed to convert Composite Video, S-Video or YCbCr Component Video signals to a variety of computer and HDTV resolutions for viewing on most LCD, Plasma and HDTV displays available today. Our professional video conversion products have been serving the industry for over twenty years. TV One offers a full line of high quality Video Scalers, Scan Converters, Analog-Digital (DV, SDI, DVI) Converters, Standards Converters, Digital Video Recorders, Frame Synchronizers, Time Base Correctors, LCD Monitors, Matrix Routing Switchers and Distribution Amplifiers.

1.1 Liability Statement

Every effort has been made to ensure that this product is free of errors. TV One cannot be held liable for the use of this hardware or any direct or indirect consequential damages arising from its use. It is the responsibility of the user of the hardware to check that it is suitable for his/her requirements and that it is installed correctly. All rights reserved. No parts of this manual may be reproduced or transmitted by any form or means electronic or mechanical, including photocopying, recording or by any information storage or retrieval system without the written consent of the publisher.

TV One reserves the right to revise any of its hardware and software following its policy to modify and/or improve its products where necessary or desirable. This statement does not affect the legal rights of the user in any way.

All third party trademarks and copyrights are recognised. The TV One logo, TV One-task and CORIO are the registered Trademarks of TV One. All other trademarks are the property of their respective holders.

1.2 FEATURES

- Automatic detection of NTSC, PAL or SECAM worldwide TV Standards.
- High performance Adaptive 3D Comb Filter.
- 4:3 or 16:9 Aspect Ratio.
- Per-pixel motion compensated de-interlacing for artifact-free video images.
- Automatic detection for 3:2 pull down for 24fps film source material.
- Frame rate conversion of 50Hz to 60Hz for PAL input signals.
- Vertical Temporal (VT) Filter removes jagged artifacts.
- On Screen Display for easy setup and adjustment.
- Built in DCTI/DLTI circuit for Color/Luminance transient improvement.
- PC Input connector for easy integration into an existing system.
- Last memory feature retains the last settings used.
- Control by Front Panel Buttons, RS-232 or Infrared Remote
- Video inputs are de-interlaced and scaled to the selected PC or HDTV resolution.
- RoHS Compliant
- Desk Top or Rack Mount.

1.3 Getting the Best Results

There are many factors affecting the quality of results when Composite, Component or S-Video signals are up-converted to computer resolutions. Some basic precautions will ensure the best possible performance from your Video Scaler.

Output display device – The quality of the output signal will depend largely upon the type and quality of display device used. For instance, some video projectors just look better than others.

Distance between the Video Scaler and the display device – This plays a major role in the final result. Long distances are possible, but special measures should be taken in order to avoid cable losses. These include using high quality (coax-type) cables or adding line amplifiers.

Output connection cables – Low quality cables are susceptible to interference. They degrade signal quality due to poor matching and cause elevated noise levels. Therefore, cables should be of the best quality. Coax-type computer cables are recommended because of their superior internal shielding characteristics.

Interference from nearby electrical devices – These can have an adverse effect on signal quality. For example, an older computer monitor often emits very high electromagnetic fields that can interfere with the performance of video equipment in its proximity.

2.0 IMPORTANT SAFETY INSTRUCTIONS

To insure the best from this product, please read this manual carefully. Keep it in a safe place for future reference.

To reduce the risk of electric shock, do not remove the cover from the unit. No user serviceable parts inside. Refer servicing to qualified personnel.

2.1 POWER AND CONNECTIONS

This unit is not disconnected from the AC power source as long as it is connected to the wall outlet. The off state for this unit is called standby mode. In standby mode the unit is designed to consume a reduced quantity of power compared to normal operating modes.

When not using the unit for a long period of time, insure that the AC power cord is disconnected from the wall outlet.

The AC wall outlet should be installed near to the unit and be easily accessible.

Do not plug in or attempt to operate an obviously damaged unit.

2.2 WATER AND MOISTURE

To reduce the risk of fire, do not expose the unit to rain, water or excessive moisture.

2.3 GENERAL CARE

Do not force switches or external connections.

When moving the unit, disconnect the serial port connections first then the power cable and finally the interconnecting cables to other devices.

Do not attempt to clean the unit with chemical solvents or aerosol cleaners, as this may damage the unit. Use a clean dry cloth.

2.4 LOCATION

Installation of this unit should be in a cool dry place, away from sources of excessive heat, vibration, dust, moisture and cold.

2.5 VENTILATION

Slots and openings in the sides of the unit are provided for ventilation. To insure reliable operation, avoid obstruction of these openings and insure the unit is installed in a well-ventilated area.

3.0 INTELLECTUAL PROPERTY

Some IC chips in this product include confidential and/or trade secret property. Therefore you may not copy, modify, adapt, translate, distribute, reverse engineer, reverse assemble, or decompile the contents thereof.

2.0 IMPORTANT: CONSIGNES DE SECURITE

Afin de tirer le meilleur de ce produit, merci de lire attentivement ce manuel. Gardez-le dans un endroit sûr pour pouvoir le consulter à nouveau.

Afin de réduire le risque de choc électrique, ne retirez pas l'unité de sa protection.

Aucune pièce réparable par l'utilisateur à l'intérieur. Référez-vous à des personnes qualifiées.

2.1 ALIMENTATION ELECTRIQUE ET CONNEXIONS

Cette unité n'est pas déconnectée de la source de courant électrique tant qu'elle est connectée à la prise murale. Le mode éteint de cette unité est appelé mode de veille.

En mode de veille, cette unité est conçue pour consommer une quantité réduite de courant par rapport aux modes normaux d'utilisation.

Lorsque vous n'utilisez pas l'unité pendant une longue période, assurez-vous que le câble d'alimentation électrique est déconnecté de la prise murale.

La prise murale de courant doit être installée près de l'unité et aisément accessible.

Ne branchez pas et n'essayez pas d'utiliser une unité visiblement endommagée.

2.2 EAU ET HUMIDITE

Afin de réduire le risque d'incendie n'exposez pas l'unité à la pluie, l'eau ou à une humidité excessive.

2.3 ENTRETIEN GENERAL

Ne forcez pas les boutons ou connexions externes.

Lorsque vous déplacez l'unité, déconnectez d'abord les connexions de ports en série puis le câble d'alimentation et enfin les câbles de connexion avec d'autres appareils.

N'essayez pas de nettoyer l'unité avec des dissolvants chimiques ou des produits nettoyants en aérosol, car cela peut endommager l'unité. Utilisez un chiffon propre et sec.

2.4 EMPLACEMENT

L'installation de cette unité doit se faire dans un endroit frais et sec, éloigné de sources excessives de chaleur, de vibrations, de poussière, d'humidité et de froid.

2.5 AERATION

Les rainures et les ouvertures sur les cotés de l'unité servent à l'aérer. Pour permettre une utilisation sûre, évitez d'obstruer ces ouvertures et assurez-vous que l'unité est installée dans un endroit bien aéré.

3.0 PROPRIETE INTELLECTUELLE

Certaines puces IC dans ce produit contiennent des éléments propriétaires confidentiels et/ou des secrets commerciaux. Vous ne devez donc pas copier, modifier, adapter, traduire, distribuer, démonter, désassembler, ou décomposer leur contenu.

2.0 INSTRUCCIONES IMPORTANTES DE SEGURIDAD

Para sacar el mejor provecho de este producto, léase este manual con detenimiento. Guárdelo en un lugar seguro para poder hacerle referencia en el futuro.

Para reducir el riesgo de calambre, no quite la cubierta del aparato.

No hay piezas utilizables dentro. Remítase todo mantenimiento a personal cualificado.

2.1 CORRIENTE Y CONEXIONES

Mientras esté conectada a una toma de electricidad, el aparato seguirá conectado a la fuente de corriente CA. A la posición de «off» de este aparato se le denomina posición de espera. En la posición de espera, el aparato está diseñado a consumir una cantidad reducida de electricidad en comparación con los modos de operación normales.

Asegúrese de desconectar el cable de corriente CA de la toma de la pared cuando no va a utilizar el aparato por un periodo largo de tiempo.

La toma CA de la pared ha de estar instalada cerca del aparato y debe ser fácilmente accesible.

No enchufe ni intente operar un aparato que esté evidentemente dañado.

2.2 AGUA Y HUMEDAD

Para reducir el riesgo de incendio no exponga el aparato a la lluvia, el agua o la humedad excesiva.

2.3 CUIDADO GENERAL

No forzar interruptores o conexiones externas.

Al mover el aparato, desconecte las conexiones del puerto en serie primero, luego el cable de electricidad y finalmente los cables interconectados a otros aparatos. No intente limpiar el aparato con disolventes químicos o productos de limpieza aerosol, ya que podrían dañar el aparato. Utiliza un paño limpio y seco.

2.4 UBICACIÓN

Este aparato se debe instalar en un lugar seco y fresco, lejos de fuentes de calor excesivas, la vibración, el polvo, la humedad y el frío.

2.5 VENTILACIÓN

El aparato viene provisto de ranuras y agujeros en los lados para la ventilación.

Para asegurar una operación eficaz, se debe evitar la obstrucción de estos agujeros y también asegurar que el aparato se instale en una zona con adecuada ventilación.

3.0 PROPIEDAD INTELECTUAL

Algunos chips con circuito integrado de este producto incluyen propiedad confidencial y/o propiedad de secreto comercial. Por lo tanto queda prohibido copiar, modificar, adaptar, traducir, distribuir, usar técnicas retroactivas, desmontar, o recopilar los contenidos del mismo.

2.0 WICHTIGE SICHERHEITSVORSCHRIFTEN

Lesen Sie diese Bedienungsanleitung bitte sorgfältig, um Ihr Produkt optimal nützen zu können, und bewahren Sie sie zum späteren Nachschlagen an einem sicheren Ort auf.

Entfernen Sie bitte keinesfalls die Abdeckung, um der Gefahr eines Stromschlags vorzubeugen.

Im Inneren des Geräts befinden sich keine Teile, die vom Benutzer gewartet werden können. Lassen Sie Wartungsarbeiten nur von Fachpersonal durchführen.

2.1 STROMVERSORGUNG UND ANSCHLÜSSE

Solange das Gerät mit einer Steckdose verbunden ist, bleibt die Stromversorgung aufrecht. Der Ausschaltzustand des Geräts wird als Standbymodus bezeichnet. Im Standbymodus verbraucht das Gerät weniger Strom als in den üblichen Betriebsarten.

Wird das Gerät über einen längeren Zeitraum hinweg nicht verwendet, ziehen Sie bitte das Stromkabel aus der Steckdose.

Die Steckdose sollte sich in der Nähe des Geräts befinden und leicht zugänglich sein.

Verbinden Sie ein offensichtlich beschädigtes Gerät keinesfalls mit einer Steckdose und versuchen Sie auch nicht, es zu bedienen.

2.2 WASSER UND FEUCHTIGKEIT

Setzen Sie das Gerät weder Regen, Wasser noch übermäßiger Feuchtigkeit aus, um der Gefahr eines Brandes vorzubeugen.

2.3 ALLGEMEINE PFLEGE

Wenden Sie bei der Handhabung von Schaltern und Anschlüssen keine Gewalt an.

Beim Umstellen des Geräts entfernen Sie zuerst die seriellen Anschlüsse, dann das Stromkabel und zum Schluss die Verbindungskabel zu anderen Geräten.

Versuchen Sie keinesfalls, das Gerät mit chemischen Lösungsmitteln oder Sprayreinigern zu reinigen, da dies das Gerät beschädigen könnte. Verwenden Sie ein sauberes, trockenes Tuch.

2.4 AUFSTELLUNG

Das Gerät sollte an einem kühlen, trockenen Ort aufgestellt werden, fern von übermäßiger Wärme, Vibrationen, Staub, Feuchtigkeit und Kälte.

2.5 BELÜFTUNG

Seitliche Schlitze und Öffnungen sorgen für die Belüftung des Geräts. Um die ordnungsgemäße Belüftung zu gewährleisten, dürfen diese Öffnungen nicht verdeckt werden. Sorgen Sie außerdem dafür, dass das Gerät an einem gut belüfteten Ort aufgestellt wird.

3.0 GEWERBLICHES EIGENTUM

Einige integrierte Schaltkreise in diesem Produkt enthalten vertrauliche

Informationen und/oder Betriebsgeheimnisse. Sie dürfen daher diese Inhalte nicht kopieren, modifizieren, adaptieren, übersetzen, verteilen, rückentwickeln, rückassemblieren oder dekompileieren.

2.0 BELANGRIJKE VEILIGHEIDSINSTRUCTIES

Lees deze handleiding zorgvuldig door om het beste uit uw product te halen. Bewaar het op een veilige plek voor raadpleging in de toekomst.

Haal nooit het omhulsel van de eenheid af, dit om de kans op een elektrische schok te verminderen. Maak het apparaat nooit open: er bevinden zich geen door de gebruiker in te stellen onderdelen in het apparaat. Laat service en onderhoud over aan een gekwalificeerde technicus.

2.1 ELEKTRICITEIT EN AANSLUITING

Deze eenheid is niet van de wisselstroom voedingsbron gescheiden wanneer de stekker nog in het stopcontact zit. Wanneer de eenheid uitstaat, staat deze nog in de

stand-by modus. In de stand-by modus vergt de eenheid minder stroom dan in de normale "aan" modus.

Wanneer u de eenheid voor langere tijd niet gebruikt, zorg er dan voor dat de stekker van het wisselstromsnoer uit het stopcontact is getrokken.

Het wisselstroom stopcontact moet dichtbij de eenheid geïnstalleerd worden en makkelijk toegankelijk zijn.

Als de eenheid duidelijk beschadigd is moet u deze nooit op het lichtnet aansluiten of bedienen.

2.2 WATER EN VOCHTIGHEID

Zorg ervoor dat de eenheid niet aan regen, water of extreme vochtigheid wordt blootgesteld, dit om brand te voorkomen.

2.3 ALGEMEEN ONDERHOUD

Forceer schakelaars of externe aansluitingen nooit.

Bij verplaatsing van de eenheid, de seriële poortaansluitingen eerst loskoppelen, dan de voedingskabel en als laatste de snoeren naar andere apparaten.

Probeer de eenheid nooit met chemische oplosmiddelen of schoonmaakmiddelen in een spuitbus schoon te maken, omdat dit de eenheid kan beschadigen. Gebruik een schone droge doek.

2.4 PLAATSING

Deze eenheid moet geïnstalleerd worden op een koele droge plaats, uit de buurt van bronnen van extreme hitte, vibraties, stof, vocht en kou.

2.5 VENTILATIE

De sleuven en openingen aan de zijkant van de eenheid zijn voor ventilatie. Zorg er voor dat de eenheid op een goed geventileerde plek geïnstalleerd wordt zodat deze betrouwbaar werkt.

3.0 INTELLECTUEEL EIGENDOM

Sommige IC chips in dit product bevatten vertrouwelijke informatie en/of fabrieksgeheimen. U mag daarom de inhoud hiervan niet kopiëren, wijzigen, aanpassen, vertalen, verspreiden, nabouwen, of decompileren.

4.0 SPECIFICATIONS

PC Input (For Loop-thru)	RGBHV or YPbPr
Max PC Input Resolution	1600x1200
PC Input Connector Type	HD15 Female
Video Inputs & Connector Type	Composite Video on BNC Connector S-Video on 4-Pin Mini-DIN Connector YCbCr Component Video on 3 BNC Connectors
Video Standards	NTSC, SECAM, PAL-B, PAL-G, PAL-I, PAL-D
Manual Control	Front Panel Buttons
Infrared Control	RC-20 Remote Control
Information Display	On Screen Display
Video Adjustments	Brightness, Contrast, Color, Tint (NTSC), Sharpness
Weight	3.5 lbs (1.6 kg) Approximately
Dimensions - HxWxD	1.75"x11.5"x 7" (44x292x178mm)
Power Source	100-240VAC, 50-60Hz

Output Signal Specifications

PC Output Resolutions		Vert Rate	Horiz Rate	Format	Scan Type
VGA	640x480	59.94 Hz	31.469 KHz	RGBHV	Progressive
SVGA	800x600	60.32 Hz	37.880 KHz	RGBHV	Progressive
XGA	1024x768	60.00 Hz	48.360 KHz	RGBHV	Progressive
SXGA	1280x1024	60.20 Hz	63.981 KHz	RGBHV	Progressive
HDTV Out Resolutions		Vert Rate	Horiz Rate	Format	Scan Type
480p	852x480	59.94 Hz	31.469 KHz	YPbPr	Progressive
576p	852x576	50.00 Hz	31.250 KHz	YPbPr	Progressive
720p	1280x720	59.94 Hz	44.995 KHz	YPbPr	Progressive
1080i	1920x1080	59.94 Hz	33.716 KHz	YPbPr	Interlaced

5.0 CHECKING PACKAGE CONTENTS

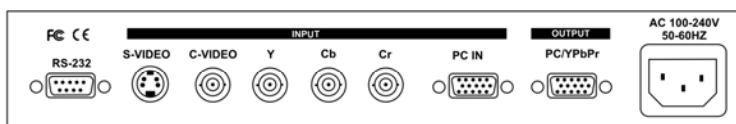
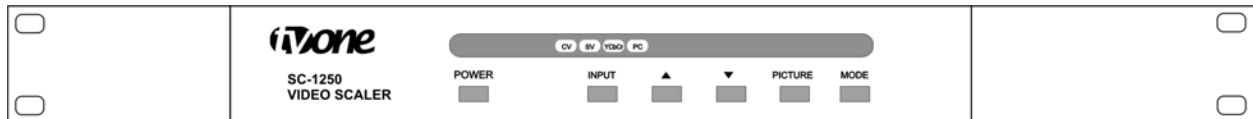
Before attempting to use this unit, please check the packaging and make certain the following items are contained in the shipping carton:

- SC-1250 Video Scaler
- AC Power Cable
- Composite Video Input Cable – BNC/BNC
- S-Video Input Cable
- Component Video Input Cable – 3-BNC/3-BNC
- HD-15 to 3-BNC Output Cable
- HD-15 to HD-15 Output Cable
- IR Remote Control Unit
- Rack Mount Kit
- User Manual

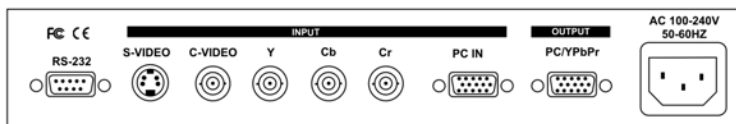
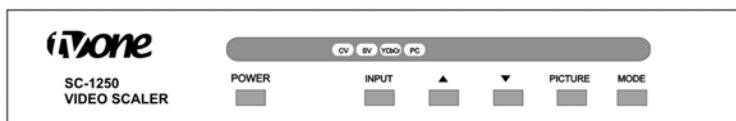
Note: Please retain the original packing material should the need ever arise to return the unit. If you find any items are missing, contact your reseller or TV One immediately. Have the Model Number, Serial Number and Invoice available for reference when you call.

6.0 CONNECTING THE HARDWARE

Attach the supplied Rack Mount kit to the unit if desired, connect a video source to the input of the SC-1250 and then connect its output to a display device.



SC-1250 with Rack Mount Kit Installed



SC-1250 Desk Top Version

6.1 Connecting the Video Inputs

The Video Scaler can accept a Composite Video, S-Video or YCbCr Component Video input signal for scaling, as well as a computer signal input that can be passed through.



Composite Video - use a BNC cable to connect the Composite Video output of the source equipment to the connector labeled "VIDEO" on the back of the unit.

S-Video - use an S-Video cable to connect the S-Video output of the source video equipment to the connector labeled "S-VIDEO" on the back of the unit. S-Video provides improved performance over Composite Video and is recommended whenever possible.

Component Video - use a 3-BNC/3-BNC cable to connect the YCbCr Component output of the source video equipment to the 3 connectors labeled “Y, Cb, Cr” on the back of the unit. Component Video provides the better performance than Composite Video or S-Video and is recommended whenever possible.

PC Video - connect the source computer’s VGA output signal to the HD15 connector labeled “PC IN” on the back of the unit. **Note** – This PC Input Signal is not scaled, but is available for pass-through when the PC Source is selected. This input may also be used for a YPbPr input.

6.2 Connecting the Video Output

Connect the SC-1250’s output to the destination display device, such as an LCD computer monitor, video projector, HDTV Set or other device, via the HD15 connector on the back labeled “OUTPUT”.

Note: The output signal format can be selected as either PC (RGB) or HDTV (YPbPr) and will be covered later in this manual. When PC is selected, use the HD-15 to HD-15 cable supplied to connect to the display device. When HDTV is selected, use the HD-15 to 3-BNC cable supplied to connect to the display.

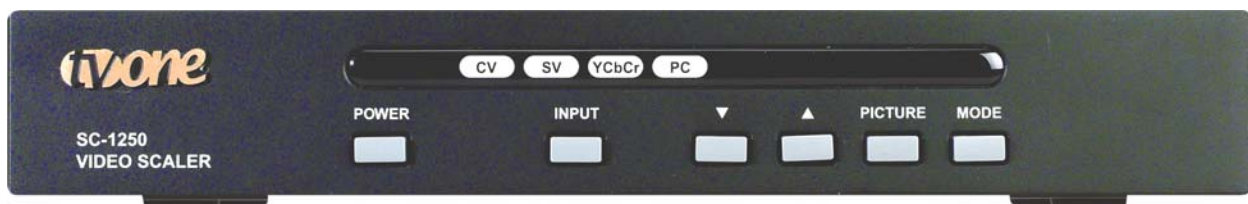
6.3 Connecting Power to the Unit

The SC-1250 can accept 100-240VAC@50-60Hz. When the unit’s front panel Power Switch is turned On, the Power LED indicator on the front will illuminate.

7.0 OPERATING THE UNIT

7.1 Front Panel Control

The SC-1250 is controlled via Front Panel Buttons and status is indicated by On Screen Display (OSD).



7.2 Mode Button

Press the Mode Button repeatedly to toggle through the following controls, as shown on the OSD (On Screen Display) of the video display connected to the output of the unit.

Source Mode: While in this mode, press the ▲ or ▼ Button to choose the desired input source from: Video, S-Video or Component Video.

Resolution Mode: If the output is selected as RGB, press ▲ or ▼ Button to choose the output resolution from: VGA, SVGA, XGA or SXGA for PC output. If the output is

selected as YPbPr, press ▲ or ▼ Button to choose from 480p, 576p, 720p or 1080i for HDTV output.

Output Mode: Press ▲ or ▼ Button to select either PC (RGB) or HDTV (YPbPr) out.

Aspect Mode: Press ▲ or ▼ Button to choose between Standard Aspect (4:3) and Wide Aspect (16:9) output.

3D Enhance Mode: Turn the 3D Comb Filter function On or Off with the ▲ and ▼ Buttons. *Note – When VCR or non-standard video source is connected to the input, the output picture may jitter. If this occurs, please turn off the 3D Enhance function.*

Digital NR Mode: Turn the Digital Noise Reduction function On or Off by using the ▲ and ▼ Buttons.

7.3 Picture Button

Press the Picture Button repeatedly to toggle through the following picture adjustment parameters, then use the ▲ and ▼ Buttons to adjust the level.

Contrast: The range of this adjustment is 0~48. The Factory Default is 40.

Bright: The range of this adjustment is 0~48. The Factory Default is 24.

Color: The range of this adjustment is 0~48. The Factory Default is 24.

Tint: (NTSC Only) The range of this adjustment is 0~48. The Factory Default is 24.

Sharpness: The range of this adjustment is 0~48. The Factory Default is 10.

7.4 Input Button

Press the Input Button to toggle through the input sources.

7.5 ▲ ▼ Buttons

Press these buttons for control or to set values as described above.

7.6 IR Sensor Window

This window allows IR commands access to the unit.

7.7 Power LED and Button

The Power LED illuminates when the unit has power on. The Power Button turns the power On and Off, when the Power Adapter is connected to the rear of the unit.

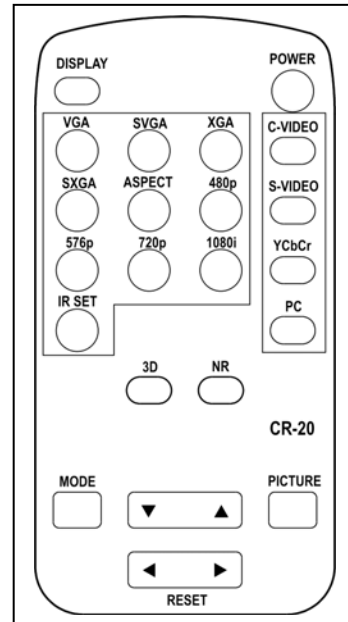
7.8 Factory Reset

When in the Picture Adjust Mode (5.2), simultaneously pressing and holding the ▲ and ▼ Buttons for 5 seconds returns the unit to all the Factory Default settings.

7.9 Infrared Control

Most functions of the SC-1250 can be controlled from the CR-20 Infrared Remote Control unit. Below is a brief description of the commands.

- **Power:** Turns Power On/Off
- **Display:** Turn Resolution Information OSD On/Off
- **C-Video:** Selects Composite Video Input
- **S-Video:** Selects S-Video Input
- **YCbCr:** Selects Component Video Input
- **PC:** Selects PC Input to Loop-through
- **VGA:** Sets Output Resolution as 640x480
- **SVGA:** Sets Output Resolution as 800x600
- **XGA:** Sets Output Resolution as 1024x768
- **SXGA:** Sets Output Resolution as 1280x1024
- **480p:** Sets Output Resolution as 852x480p
- **576p:** Sets Output Resolution as 852x576p
- **720p:** Sets Output Resolution as 1280x720p
- **1080i:** Sets Output Resolution as 1920x1080i
- **Aspect:** Selects Normal or Wide Aspect Ratio
- **IR Set:** Hold for 15 sec to unlock Front Panel
- **3D:** Turn 3D Enhance On/Off
- **NR:** Turn Digital Noise Reduction On/Off
- **Mode:** Same as Mode on Front Panel
- **Picture:** Same as Picture on Front Panel
- **Reset:** Not Used for this model



7.10 RS-232 Remote Control Protocol

RS-232 Remote Control Protocol

Pin definition of modem cable*

Video Scaler		Direction	Remote Controller	
Pin	Definition		Pin	Definition
1	NC		1	NC
2	TXD	>>>>	2	RXD
3	RXD	<<<<	3	TXD
4	NC		4	NC
5	GND	<<<<>>>>	5	GND
6	NC		6	NC
7	NC		7	NC
8	NC		8	NC
9	NC		9	NC

* The connection between video scaler and remote controller with RS-232 modem cable.

RS-232 Transmission Format

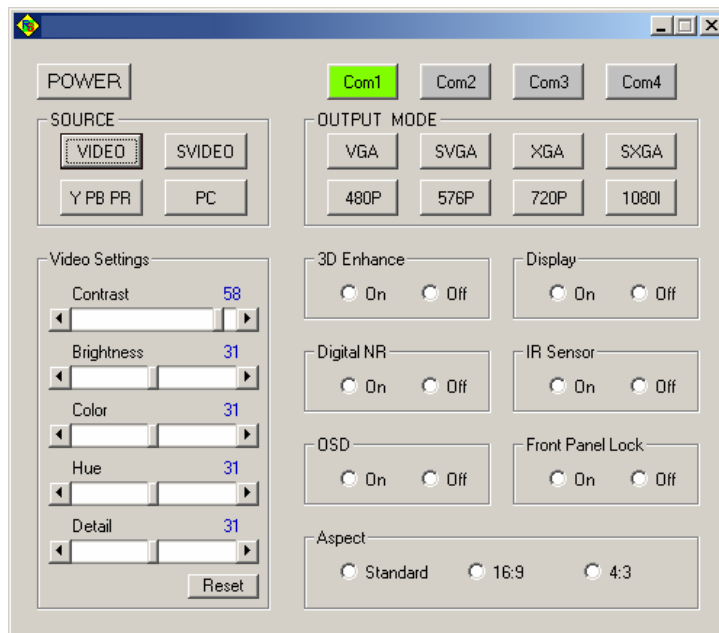
Communication is at 9600, no parity, 8 bits, 1 stop bit, no flow control.

Command	Response	Description
"[POWER1]"	"[POWER1]"	Power On(Normal)
"[POWER0]"	"[POWER0]"	Power Off (Standby)
"[IN0]"	"[IN0]"	Composite Video Input
"[IN1]"	"[IN1]"	S Video Input
"[IN2]"	"[IN2]"	Y CB CR Input
"[IN3]"	"[IN3]"	PC Input
"[OUTPC0]"	"[OUTPC0]"	PC VGA Output
"[OUTPC1]"	"[OUTPC1]"	PC SVGA Output
"[OUTPC2]"	"[OUTPC2]"	PC XGA Output
"[OUTPC3]"	"[OUTPC3]"	PC SXGA Output
"[OUTH0]"	"[OUTH0]"	HD 480P Output
"[OUTH1]"	"[OUTH1]"	HD 576P Output
"[OUTH2]"	"[OUTH2]"	HD 720P Output
"[OUTH3]"	"[OUTH3]"	HD 1080I Output
"[OSD0]"	"[OSD0]"	OSD Off
"[OSD1]"	"[OSD1]"	OSD On
"[DISPLAY0]"	"[DISPLAY0]"	Display Off
"[DISPLAY1]"	"[DISPLAY1]"	Display On
"[IR0]"	"[IR0]"	IR Sensor Off
"[IR1]"	"[IR1]"	IR Sensor On
"[PANEL0]"	"[PANEL0]"	Front Panel Lockout On
"[PANEL1]"	"[PANEL1]"	Front Panel Lockout Off
"[COMB0]"	"[COMB0]"	3D Enhance Off
"[COMB1]"	"[COMB1]"	3D Enhance On
"[DNR0]"	"[DNR0]"	Digital NR Off
"[DNR1]"	"[DNR1]"	Digital NR On
"[ASPECT0]"	"[ASPECT0]"	Aspect Standard
"[ASPECT1]"	"[ASPECT1]"	Aspect 16:9
"[ASPECT2]"	"[ASPECT2]"	Aspect 4:3
"[CONTRASTx]"	"[CONTRASTx]"	Contrast x=0~63
"[BRIGHTx]"	"[BRIGHTx]"	Brightness x=0~63
"[COLORx]"	"[COLORx]"	Color x=0~63
"[HUEx]"	"[HUEx]"	Tint x=0~63
"[DETAILx]"	"[DETAILx]"	Sharpness x=0~63
"[RESET]"	"[CONTRAST58]" "[BRIGHT31]" "[COLOR31]" "[HUE31]" "[DETAIL10]"	Video Adjustment Reset
"[STATUS]"	"[POWER?]" "[IN?]" "[OUTPC?]" "[OUTH?]" "[OSD?]" "[DISPLAY?]" "[IR?]" "[PANEL?]" "[COMB?]" "[DNR?]"	Retrieve Video Scaler Status

"[STATUS]"	"[ASPECT?]" "[CONTRAST?]" "[BRIGHT?]" "[COLOR?]" "[HUE?]" "[DETAIL?]"	Retrieve Video Scaler Status (Continued)
------------	--	---

7.11 Windows Control panel

Included with the SC-1250 is a Windows Control Panel that connects to the unit via the RS-232 interface.



8.0 TROUBLESHOOTING

It is suggested you follow these steps to correct apparent operational problems:

Problem	Possible Solution
No picture on the output monitor	If the LED is illuminated, check that there is a correct Video Input signal and that the display device connected to the output is switched on and set to the correct input and its Brightness and Contrast are set correctly.
Colors appear wrong on the output monitor	Try adjusting the Color, Tint, Contrast and Brightness settings on your display. These are usually set up for viewing computer images, which may be somewhat different from viewing images that have been up-converted from video. Make sure your output cable assembly is not faulty, which could prevent either the Red, Green or Blue signal from being passed through the cable.
Too much smearing	Smearing usually occurs when a Composite Video input is used and is generally unavoidable, unless you can switch to using S-Video. Using good quality video cable will help towards reducing this affect. Smearing that may not be noticeable on a small video monitor may become objectionable on a large screen video projector.
No color on the output monitor, only a black and white image	Check the condition of the cables being used. A faulty S-Video cable can often cause a black and white image. Ensure that the color controls on your computer monitor or video projector are all set correctly. Ensure that the color adjustment on the Video Scaler is not adjusted completely down. It may be necessary to reset the video levels by pressing the + and – Buttons simultaneously.

After trying the above suggestions should the problem still persist, contact your dealer for additional suggestions before contacting TV One. Should the dealer's technical personnel be unable to assist you, contact TV One via our support website: **<http://tvone.crmdesk.com>**. Create a technical support request on the site and our support team will respond within a short period of time.

9.0 LIMITED WARRANTY

LIMITED WARRANTY – With the exceptions noted in the next paragraph, TV One warrants the original purchaser that the equipment it manufactures or sells will be free from defects in materials and workmanship for a period of two years from the date of purchase. Should this product, in TV One’s opinion, prove defective within this warranty period, TV One, at its option, will repair or replace this product without charge. Any defective parts replaced become the property of TV One. This warranty does not apply to those products which have been damaged due to accident, unauthorized alterations, improper repair, modifications, inadequate maintenance and care, or use in any manner for which the product was not originally intended.

Items integrated into TV One products that are made by other manufacturers, notably computer hard drives and liquid crystal display panels, are limited to the term of the warranty offered by the respective manufacturers. Such specific warranties are available upon request to TV One.

If repairs are necessary under this warranty policy, the original purchaser must obtain a Return Authorization Number from TV One and return the product to a location designated by TV One, freight prepaid. After repairs are complete, the product will be returned, freight prepaid.

LIMITATIONS - All products sold are "as is" and the above Limited Warranty is in lieu of all other warranties for this product, expressed or implied, and is strictly limited to two years from the date of purchase. TV One assumes no liability to distributors, resellers or end-users or any third parties for any loss of use, revenue or profit.

TV One makes no other representation of warranty as to fitness for the purpose or merchantability or otherwise in respect of any of the products sold. The liability of TV One with respect to any defective products will be limited to the repair or replacement of such products. In no event shall TV One be responsible or liable for any damage arising from the use of such defective products whether such damages be direct, indirect, consequential or otherwise, and whether such damages are incurred by the reseller, end-user or any third party.

10.0 REGULATORY COMPLIANCE

The SC-1250 Video Scaler has been tested for compliance with: FCC and CE.

The Power Supply has been tested for compliance with: UL, CSA and CE.

The SC-1250 Scaler is RoHS compliant.

11.0 CONTACT INFORMATION

Should you have questions or require assistance with this product in areas not covered by this manual, please contact TV One at the appropriate location shown below:

TV One USA

1350 Jamike Drive
Erlanger, KY 41018
USA
Tel 800-721-4044
Fax 859-282-8225
sales@tvone.com
www.tvone.com

TV One Europe

Continental Approach
Westwood Industrial Estate
Margate, Kent CT9 4JG, UK
Tel +44 (0)1843 873311
Fax +44 (0)1843 873312
sales.europe@tvone.com
www.tvone.co.uk

TV One Latin America

2790 NW 79 Ave
Miami, FL 33122
USA
Tel 305-418-9305
Fax 305-418-3096
sales.latinamerica@tvone.com
www.tvonela.com

TV One Mercosur

Honduras 5849, 2nd Floor, Office C
(C1414BNI) Capital Federal
Buenos Aires, Argentina
Tel +54 11 4771-5570
Fax +54 11 4771-5570
sales.mercosur@tvone.com
www.tvonela.com

TV One Asia

10F, NO.34, Sec. 2
San-Min Rd, Panchiao City
Taipei Hsien 220
Taiwan R.O.C.
Tel +886 2 8951-0674
Fax +886 2 8951-0675
sales.asia@tvone.com
www.tvoneasia.com

TV One China

Rm. A 17C,
Regalia Building No.29,
Xiangcheng Rd.
Pudong, Shanghai
China (200122)
Tel +86 21 5830-2960
Fax +86 21 5081-9096
sales.china@tvone.com
www.tvonechina.com



We Provide Solutions

TV One USA

1350 Jamike Drive
Erlanger, KY 41018
USA
Tel 800-721-4044
Fax 859-282-8225
sales@tvone.com
www.tvone.com

TV One Europe

Continental Approach
Westwood Industrial Estate
Margate, Kent CT9 4JG, UK
Tel +44 (0)1843 873311
Fax +44 (0)1843 873312
sales.europe@tvone.com
www.tvone.co.uk

TV One Latin America

2790 NW 79 Ave
Miami, FL 33122
USA
Tel 305-418-9305
Fax 305-418-3096
sales.latinoamerica@tvone.com
www.tvonela.com

TV One Mercosur

Honduras 5849, 2nd Floor, Office C
(C1414BNI) Capital Federal
Buenos Aires, Argentina
Tel +54 11 4771-5570
Fax +54 11 4771-5570
sales.mercosur@tvone.com
www.tvonela.com

TV One Asia

10F, NO.34, Sec. 2
San-Min Rd, Panchiao City
Taipei Hsien 220
Taiwan R.O.C.
Tel +886 2 8951-0674
Fax +886 2 8951-0675
sales.asia@tvone.com
www.tvoneasia.com

TV One China

Rm. A 17C,
Regalia Building No.29,
Xiangcheng Rd.
Pudong, Shanghai
China (200122)
Tel +86 21 5830-2960
Fax +86 21 5081-9096
sales.china@tvone.com
www.tvonechina.com